

CHARGING A LITHIUM BATTERY IN SAFE MODE (LOW VOLTAGE)

CHARGING A LITHIUM BATTERY IN SAFE MODE

WITH A CHARGED BATTERY

If you have a charged battery (E.G. car battery) and jumper cables, follow the below steps in sequence to bring your Lithium battery out of safe mode.

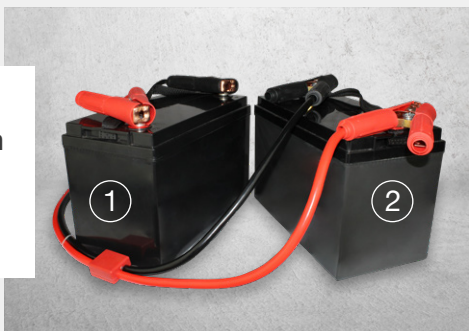
1

Disconnect all loads/inputs from the Lithium battery.



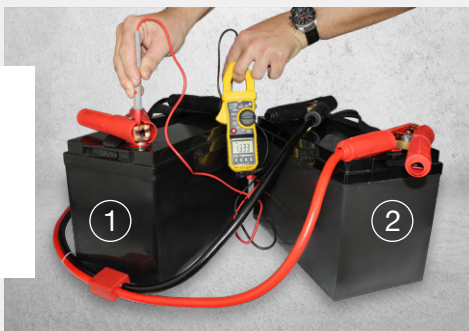
2

Connect the Lithium battery in parallel to a different battery (battery number 2).



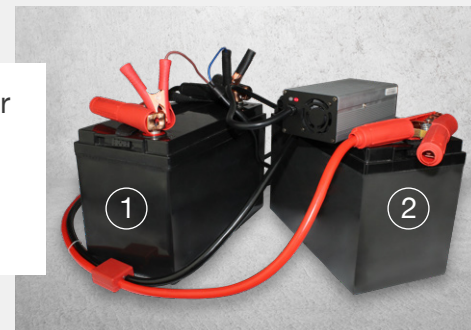
3

Cross reference the voltage on each battery now they are in parallel – they should both now read a similar voltage.



4

Connect an AC to DC charger to the Lithium battery and allow it to begin charging. We recommend a 10 amp or higher charger.



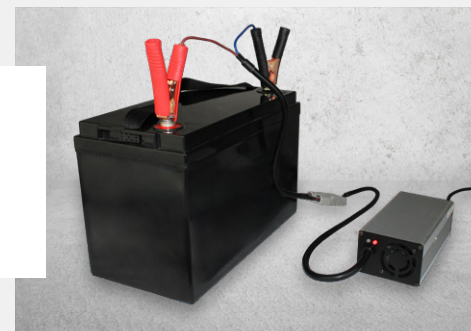
5

When the charger begins to charge the Lithium battery, disconnect battery number 2.



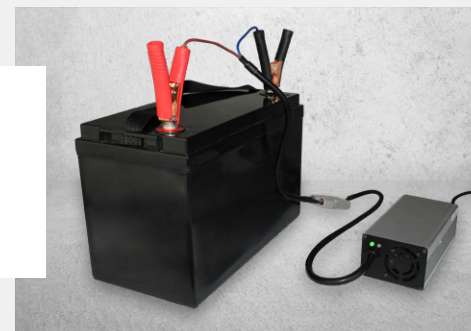
6

The charger should continue to charge the Lithium battery, bringing it out of safe mode.



7

Allow the charger to fully charge the battery.



CHARGING A LITHIUM BATTERY IN SAFE MODE

WITH A JUMP STARTER

If you have a portable Jump Starter, follow the below steps in sequence to bring your Lithium battery out of safe (low voltage) mode.

1

Disconnect all loads/inputs from the Lithium battery.



2

Connect the Jump Starter cables to the battery (Positive to Positive, Negative to Negative)



3

Connect an AC to DC charger to the Lithium battery. We recommend a 10 amp or higher charger.



4

Activate the jump starter to supply power to the Lithium battery. The charger will now detect the battery and begin to charge.



5

When the charger begins to charge the Lithium battery, disconnect the Jump Starter from the battery.



6

The charger should continue to charge the Lithium battery, bringing it out of safe mode.



7

Allow the charger to fully charge the battery.



Please refer to warranty terms and conditions.

FREECALL 1800 853 315

FIND MORE AT
aussiebatteries.com.au

